

Digital DNA incorporated in architecture

Metal mesh at the new Samsung headquarters in Silicon Valley



WORLD WIDE WEAVE

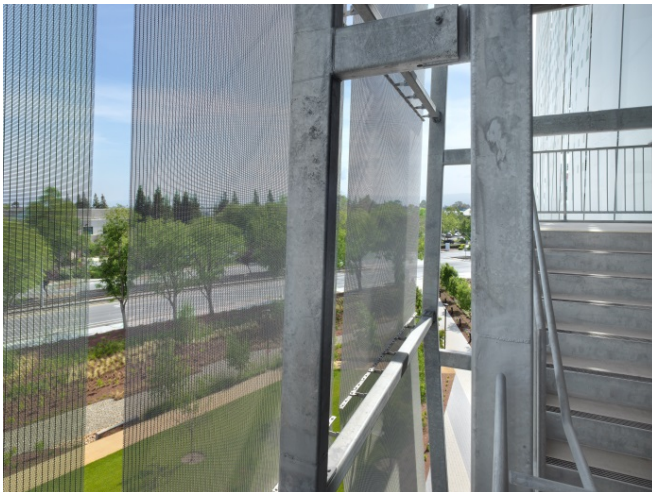


Picture 1: The open parking deck is encased by printed stainless steel mesh panels from GKD measuring up to 27 meters high and three meters wide.



Picture 2: The elongated, narrow design of the parking deck leaves maximum space for green areas and relaxation zones.

Picture 1-4 © Rien van Rijthoven



Picture 3: The semitransparent membrane ensures that the parking deck is optimally ventilated and flooded with daylight, while also functioning as a fall guard protection.



Picture 4: An artistic print reminiscent of electric circuits on circuit boards gives the shimmering texture its image-forming quality.

We will be happy to send you the desired images in printable resolution by e-mail.

These images are meant exclusively for use in connection with this particular press release on the company GKD – GEBR. KUFFERATH AG. Any other use beyond this expressed purpose, especially use in connection with other companies, is strictly prohibited.

impetus.PR

Agentur für Corporate Communications GmbH

Ursula Herrling-Tusch

Charlottenburger Allee 27-29

D-52068 Aachen

Tel: +49 [0] 241 / 1 89 25-10

Fax: +49 [0] 241 / 1 89 25-29

E-Mail: herrling-tusch@impetus-pr.de