

The blue whale

Metallic fabric encases concert hall in Argentina's prestigious new building project

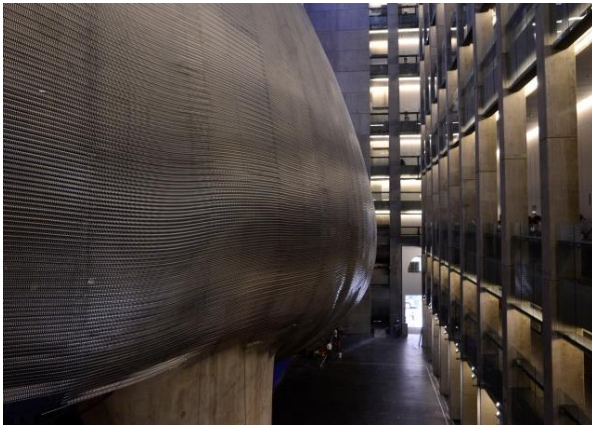


WORLD WIDE WEAVE

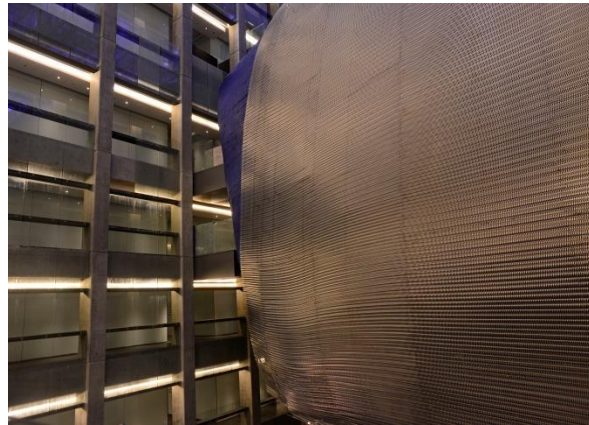


Picture 1: With the opening of the Centro Cultural Kirchner, Buenos Aires boasts the largest cultural centre in Latin America.

Picture 1-2 © GKD/Jackie Rios
Picture 3-4 © GKD/Pepe Mateos



Picture 3: The name *blue whale* owes the building to its interior, whale-formed concert hall wing with an area of 2,200 square metres.



Picture 4: The *blue whale* is encased with Escale 7 x 1 by GKD – GEBR. KUFFERATH AG.

We will be happy to send you the desired images in printable resolution by e-mail.

These images are meant exclusively for use in connection with this particular press release on the company GKD – GEBR. KUFFERATH AG. Any other use beyond this expressed purpose, especially use in connection with other companies, is strictly prohibited.

impetus.PR
Agentur für Corporate Communications GmbH

Ursula Herrling-Tusch
Charlottenburger Allee 27-29
D-52068 Aachen
Tel: +49 [0] 241 / 1 89 25-10
Fax: +49 [0] 241 / 1 89 25-29
E-Mail: herrling-tusch@impetus-pr.de